

Kyoto

Kyoto, nestled among three mountain ranges, adorned with bamboo groves and cherry trees, home to ancient shrines, pagodas and gardens, is a delight to any traveller who graces the ancient pathways and modern streets of this charming city.



Autumn Colours Kyoto

Kinkaku-ji

Easily the most recognizable building in Kyoto is Kinkaku-ji. This means “Temple of the Golden Pavilion” and indeed the top two floors of the pavilion are covered in gold leaf.

It is a Zen Buddhist temple extending out into a pond in a strolling garden of ponds, bridges and plants, rock formations and small islands.



The Golden Pavilion

Bamboo Grove

The Arashiyama Bamboo Grove is a natural forest of bamboo. It is one of the most photographed sights in the city. But no picture can capture the feeling of standing in the midst of this sprawling bamboo grove - it must be experienced.



The Bamboo Grove

The forest consists mostly of Moso Bamboo and there are several pathways for tourists and visitors to explore. It is considered to be a part of the sound-scape of Japan.

Fushimi Inari

Fushimi-Inari is an entire world of shrines and shrine gates spread across an entire mountain in Southeast Kyoto. This could rank as the single most impressive and important spot in all of Kyoto.



Fushimi Inari

The way to the inner shrine takes you through an especially impressive arcade of torii or Shinto shrine gates known as “Senbon-no-torii” (one thousand torii).

Walking through the torii you will pass various shrines and sub-shrines along the route. And, at one point, you’ll be treated to an incredible view across all of southern Kyoto.

Fushimi-Inari-Taisha enshrines the god Inari, which is the god of the rice harvest, commerce and business. The messenger of the god Inari is the fox. You will see fox images all over the shrine. They sometimes have a key in their mouth, which represents the key to the rice storehouse in ancient times.

Sagano Railway

The Sagano Train is a sightseeing train line that runs along the Hozugawa River between Arashiyama and Kameoka.

This charming, old fashioned train winds its way through the mountains at a relatively slow pace, taking about 25 minutes to make the seven kilometer journey and giving passengers a pleasant view of the scenery as they travel from Arashiyama through the forested ravine and into rural Kameoka.

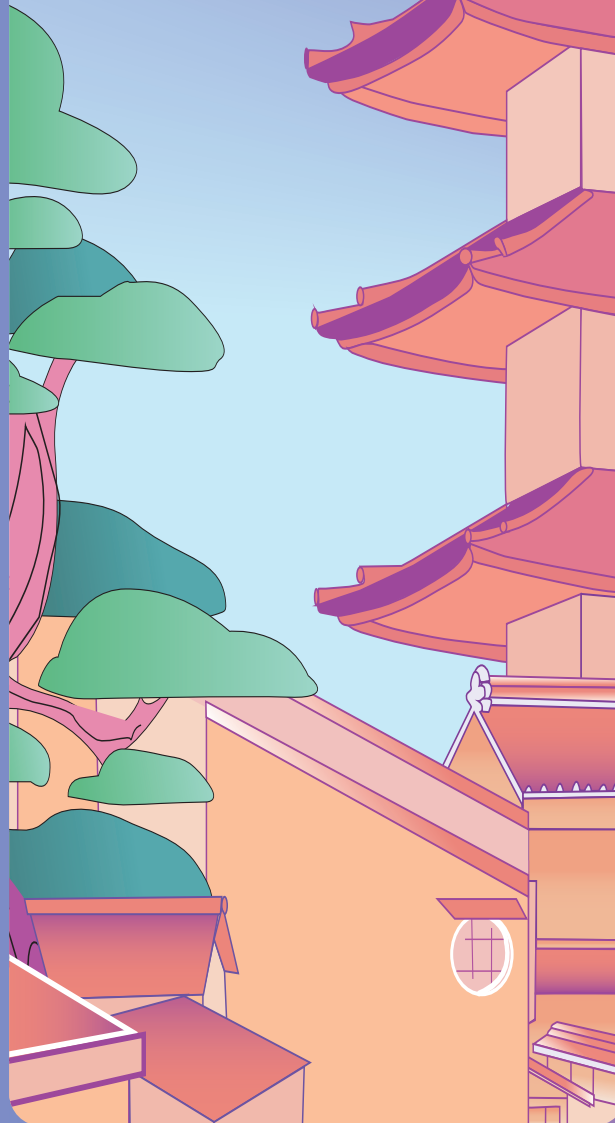


Sagano Scenic Railway

The scenic railway route is preserved and outfitted with nostalgic trains featuring wooden benches. The views along the line change with the seasons, and the train is particularly popular during the autumn color season from mid November to early December when the leaves along the ravine change color.

Shambhala Travels

www.shambhalatravels.com



Kyoto

Bamboo & Pagoda

